

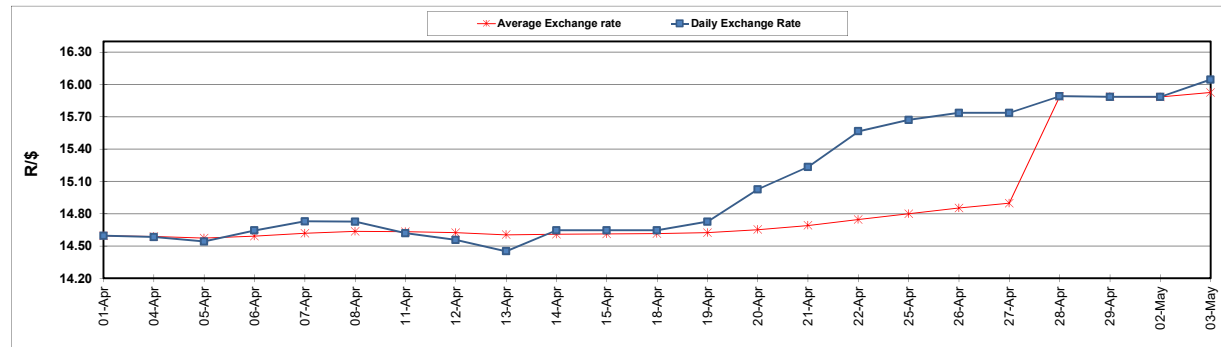
	PETROL 95 ULP	PETROL 93 ULP & LRP	DIESEL 0.05%	DIESEL 0.005%	ILL. PAR.
GAUTENG PUMP PRICE (SA c/l) AS FROM 04/05/2022	2,184.000	2,151.000	-	-	-
WHOLESALE PRICE (SA c/l) AS FROM 04/05/2022	-	-	2,199.440	2,215.840	1,664.288
SINGLE NATIONAL MAXIMUM RETAIL PRICE	-	-	-	-	2,194.000
BASIC FUEL PRICE - 03/05/2022 (SA c/l)	1,434.283	1,405.790	1,657.190	1,673.728	1,653.846
PRESS RELEASE CONTRIBUTION TO BFP 28/04/2022 - 03/05/2022 (SA c/l)	1,278.710	1,255.710	1,402.630	1,425.030	1,363.128
UNIT OVER/(UNDER) RECOVERY - 03/05/2022 (SA c/l)	(155.573)	(150.080)	(254.560)	(248.698)	(290.718)
AVERAGE BASIC FUEL PRICE 28/04/2022 - 03/05/2022	1,416.997	1,388.725	1,652.437	1,669.495	1,644.442
AVERAGE UNIT OVER/(UNDER) RECOVERY 28/04/2022 - 03/05/2022	(138.287)	(133.015)	(249.807)	(244.465)	(281.314)

### ANALYSIS MOVEMENT OF AVERAGE OVER/(UNDER) RECOVERY

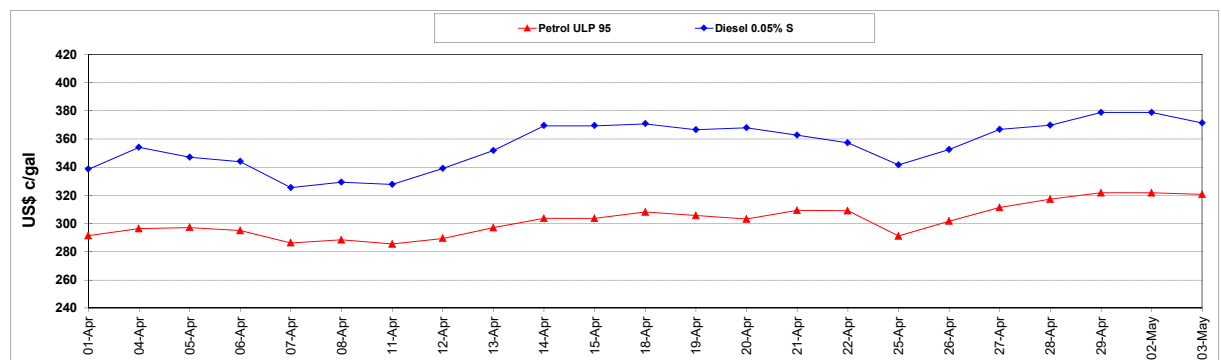
	PETROL 95	PETROL 93	DIESEL 0.05%	DIESEL 0.005%	ILL. PAR.
- MOVEMENT IN INTERNATIONAL PRODUCT PRICES	(46.956)	(43.507)	(143.302)	(136.860)	(175.324)
- MOVEMENT IN EXCHANGE RATE	(91.330)	(89.508)	(106.505)	(107.604)	(105.990)
AVERAGE UNIT OVER/(UNDER) RECOVERY 28/04/2022 - 03/05/2022	(138.287)	(133.015)	(249.807)	(244.465)	(281.314)

**R/\$ EXCHANGE RATE - (R/\$16.0450 - 03/05/2022)**

### EXCHANGE RATE USED IN BASIC FUEL PRICE



### INTERNATIONAL PRODUCT PRICES OF BASKET USED IN BASIC FUEL PRICE



### BASIC FUEL PRICE IN SA CENTS PER LITRE

